

THERMOSTATIC MIXING VALVES



R3
FLOMIX



FLOMIX

Solutions for

Hospitals
Health & Aged Care Facilities
Accessible Areas
Public Facilities
Schools & Universities
Sports & Leisure Facilities



The Flomix thermostatic mixing valve range has been designed and manufactured in Europe to satisfy the ever-changing global requirements, with a large focus on the Australian market.

The valves provide safe and stable mixed water even at varying water conditions. This technology can be used in any commercial application where safe, even, preset mixed water is required. Valves can also be supplied in Stainless Steel recessed boxes that can be powder coated to blend in with the wall.

Market Usage

Hospitals, Health and Aged Care, Child Care, Accessible areas, Public facilities, Sporting & Leisure Centers, Education, Council Amenities Facilities, Prisons, Detention, commercial facilities.

Technology

The valve can be supplied in a wide range of configurations to satisfy any commercial installation. This unique technology is supplied as chrome plated bare valves with a built in strainer, non-return valve and isolating ball valves. The Flomis will shut down in the event of a cold or hot water failure and have been designed to provide water at an even, preset and safe temperature to prevent scalding. Flomix products deliver reliable performance and should be used whenever safe warm water is required.

Configurations

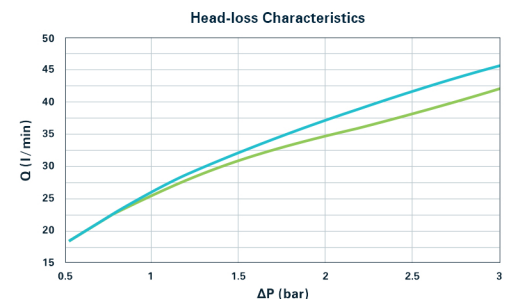
Options

Options	HOSPLAN	Standard
Valve chrome plated	MV6015	MV5015
Stainless steel box 3 hole	MVS60153	MV50153
Stainless steel box 4 hole	MVS60154	MV50154

Flow Rate

To ensure stable outlet conditions use a minimum of 4lpm as per the graph.

— ½ in BSP Outlet
— ¾ in BSP Outlet



Water pressure Dynamic Minimum 20kpa Maximum 500kpa	Mixed Temperature Minimum 35 °C Maximum 50 °C	Accuracy ± 2 °C
Max Inlet Temperature 85 °C	Minimum Flow 4lpm	Flow Rates @ 250kpa = 42.5lpm @ 350kpa = 47lpm @ 500kpa = 54lpm
Max Inlet Pressure Ratio 10:1	Water pressure static Maximum 1400kpa	

Standard/ compliances

Install Gentec products in confidence.
Our products are tested and certified to AS/NZS 4032.1
AS/NZS 4020 and NSW Health Care



Warranty

Our standard warranty terms and condition for this range is 2 years, for further information, please refer to our standard warranty terms and condition of sale.

Installation

Product must be installed in accordance with manufacturer's recommendations and to AS/NZS 3500. It is recommended that a strainer is installed prior to the installation of this product and pressure does not exceed the manufacturer's recommendations.

Gentec Products Combining leading edge technology, design, innovation

The Gentec Australia product offering delivers fit for purpose products that are globally recognized, designed and manufactured to incorporate the best technology and have a sustainability that is durable for any commercial application.

FLOMIX

Product Name

Technical Drawing

Specifications

MV5015 / MV6015



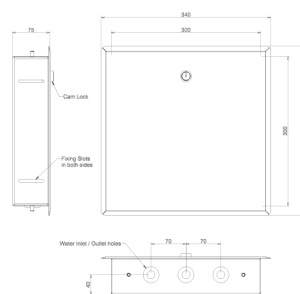
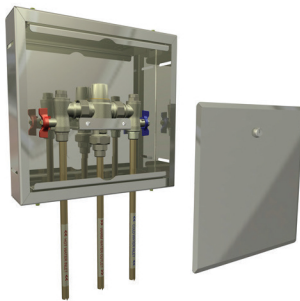
For more technical information contact your distributor.

Thermostatic Mixing Valve 15mm and 20mm outlet

MV5015 Standard

MV6015 NSW Health Care Approved

MVS50153 / MVS60153

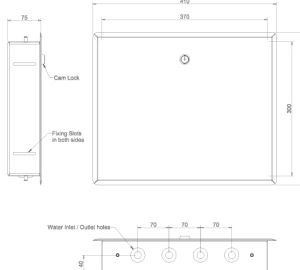
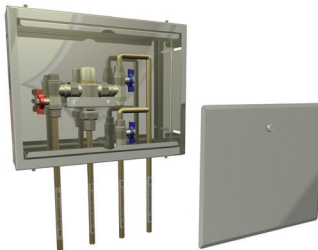


Thermostatic Mixing Valve 15mm Complete in Stainless Box Enclosure - 3 holes

MVS50153 Standard

MVS60153 NSW Health Care Approved

MVS50154 / MVS60154

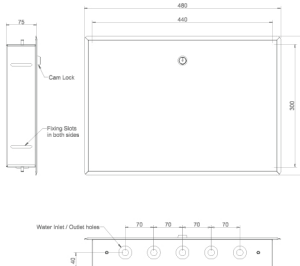
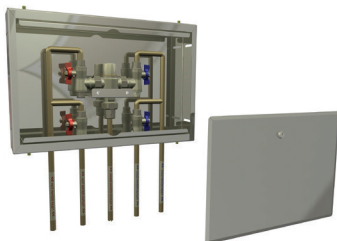


Thermostatic Mixing Valve 15mm Complete in Stainless Box Enclosure - 4 holes

MVS50154 Standard

MVS60154 NSW Health Care Approved

MVS50155 / MVS60155

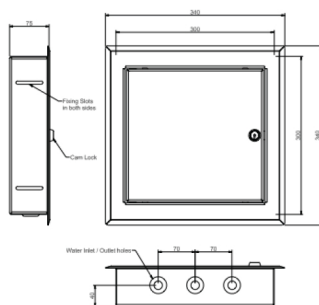


Thermostatic Mixing Valve 15mm Complete in Stainless Box Enclosure - 5 holes

MVS50155 Standard

MVS60155 NSW Health Care Approved

MVS50153H / MVS60153H

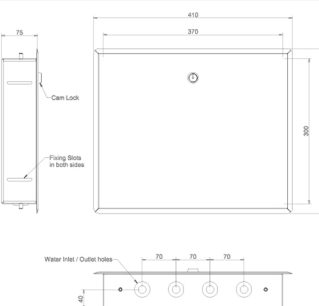
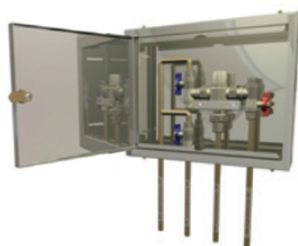


Thermostatic Mixing Valve 15mm Complete in Stainless Box Enclosure with Hinged Lid - 3 holes

MVS50153H Standard

MVS60153H NSW Health Care Approved

MVS50154H / MVS60154H



Thermostatic Mixing Valve 15mm Complete in Stainless Box Enclosure with Hinged Lid - 4 holes

MVS50154H Standard

MVS60154H NSW Health Care Approved

TEMPSET THERMOSTATIC MIXERS

R3-1
TMV Mixers



FLOMIX

Solutions for

Hospitals
Health & Aged Care Facilities
Accessible Areas
Public Facilities
Schools & Universities
Sports & Leisure Facilities



The Flomix point-of-use Tempset Thermostatic Mixers tapware range has been designed and manufactured in Europe to satisfy and meet the demand of ever-changing global requirements with a focus on the Australian market.

The point-of-use, single handed progressive mixer alleviates the risk of legionella growth. The operating mechanism used to blend the two water temperatures is the same as our standard Flomix mixing valves. It provides safe and stable mixed water even at varying water conditions. The technology can be used in any commercial application where safety is paramount

Market Usage

Hospitals, Health and Aged Care, Child Care, Accessible areas, Public facilities, Sporting & Leisure Centers, Education, Council Amenities Facilities, Prisons, Detention, commercial facilities.

Technology

This newly introduced technology is unique and is supplied as a complete basin, wall exposed and shower/bath controller with built-in strainer, non-return valves and isolating valves for point-of-use servicing. The product includes a flushing by-pass, the by-pass adaptors are available on request.

Configurations

Options

Basin Mixer
Exposed Wall Mixer
Shower or Bath Mixer

Attachments

Optional

4 star 8lpm
Laminar Flow
Flow Straightener

Associated Products

IQ Monitoring - Smart Monitoring
Smartec - Electronic Taps
Cleanline - Lever Action Taps
Flomix - Mixing Valves

Water pressure Dynamic Minimum 20kpa Maximum 500kpa	Mixed Temperature Minimum 35 °C Maximum 50 °C	Accuracy ± 2 °C
Max Inlet Temperature 85°C	Minimum Flow 4lpm	Flow Rates @ 250kpa = 42.5lpm @ 350kpa = 47lpm @ 500kpa = 54lpm
Max Inlet Pressure Ratio 10:1	Water pressure static Maximum 1400kpa	

Standard/ compliances

Install Gentec products in confidence.
Our products are tested and certified to AS/NZS 4032.1
AS/NZS 4020 and NSW Health Care



Warranty

Our standard warranty terms and condition for this range is 2 years, for further information, please refer to our standard warranty terms and condition of sale.

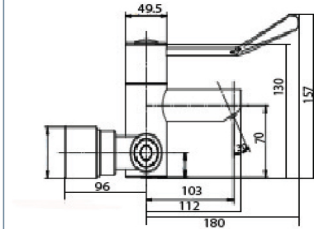
Installation

Product must be installed in accordance with manufacturer's recommendations and to AS/NZS 3500. It is recommended that a strainer is installed prior to the installation of this product and pressure does not exceed the manufacturer's recommendations.

Gentec Products Combining leading edge technology, design, innovation

The Gentec Australia product offering delivers fit for purpose products that are globally recognized, designed and manufactured to incorporate the best technology and have a sustainability that is durable for any commercial application.

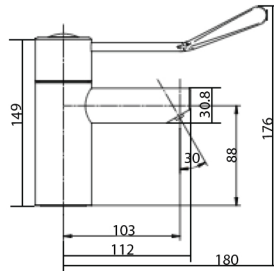
MVPM30100 / MVPM30150



Progressive Thermostatically Controlled Wall Exposed Set with Concentric Wall Bases
-5 Star 6lpm

MVPM30100 - 100mm Lever
MVPM30150 - 150mm Lever

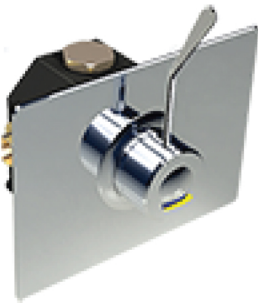
MVPM10100 / MVPM10150



Progressive Thermostatically Controlled Basin Tap
- 5 Star 6lpm

MVPM10100 - 100mm Lever
MVPM10150 - 150mm Lever

MVPM20100 / MVPM20150



Contact Gentec Australia
For More Information

Progressive Thermostatically Controlled Exposed Wall Shower/Bath Mixer - 5 Star 6lpm

MVPM20100 - 100mm Lever
MVPM20150 - 150mm Lever