



FLUE ACCESSORIES 28L & 32L INDOOR

.....
CONTINUOUS FLOW RANGE



▶ ALWAYS **HOT**
COMMERCIAL

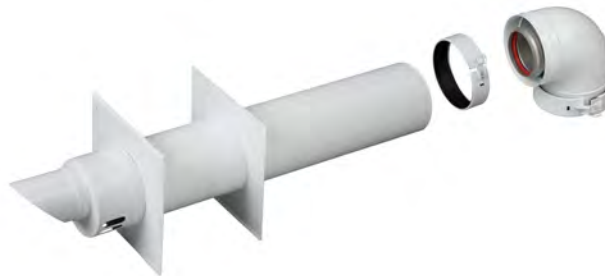


COMMERCIAL NON-CONDENSING CONTINUOUS FLOW 28L INDOOR

The Dux 28 Indoor model is designed as a room sealed system that uses a coaxial flue. The flue is made up of a durable, stainless steel inner pipe which carries exhaust gases out of the continuous flow heater to the outdoor atmosphere, whilst the white powder coated steel outer pipe draws air in for combustion.



ROOF TERMINAL
CF28C001
COAX 80/125



WALL TERMINAL
CF28C002
COAX 80/125
Wall terminal includes wall plate set and one 90° elbow



WALL BRACKET 125
CF28C007
Wall bracket is required to secure the flue parts to the wall



ELBOW 90°
CF28C003
COAX 90° 80/125



ELBOW 45°
CF28C004
COAX 45° 80/125



**KIT-OPEN
FLUE ADAPTER 28L**
CF28K001



FLUE EXTENSION
CF28C005
0.5M COAX 80/125
(CAN BE CUT)

FLUE EXTENSION
CF28C006
1M COAX 80/125
(CANNOT BE CUT)

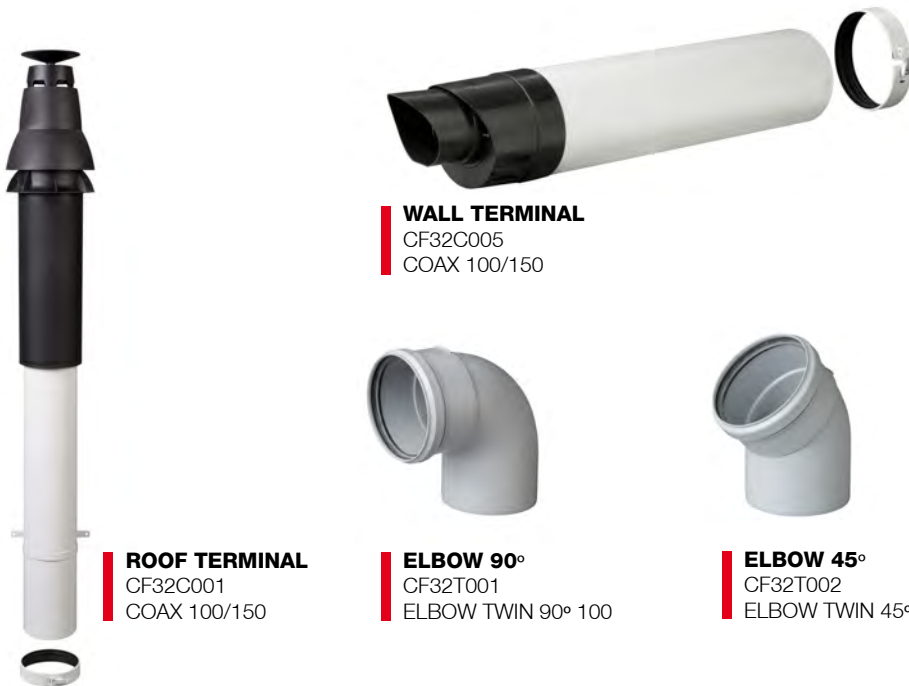
NOTE

Dux commercial continuous flow products are certified for use with these flue components and accessories ONLY.

Be aware that you may have to adjust the dip switches inside the water heater to achieve the specified system performance, depending on the total length of the flue pipe. Refer to the installation instructions for maximum flue lengths, and dipswitch settings.

COMMERCIAL CONDENSING CONTINUOUS FLOW 32L INDOOR

The Dux 32 is a room sealed system that uses a twin flue system. One pipe allows exhaust gases to travel out of the continuous flow heater, whilst the other pipe allows air in for combustion. The flue pipes are constructed from Polypropylene (PP), ensuring they are lightweight and easy to work with. PP pipes can be used on the 32 as it's a condensing unit with lower temperature exhaust gases.



ROOF TERMINAL
CF32C001
COAX 100/150

WALL TERMINAL
CF32C005
COAX 100/150



ELBOW 90°
CF32T001
ELBOW TWIN 90° 100



ELBOW 45°
CF32T002
ELBOW TWIN 45° 100



ELBOW 90° COAXIAL 100-150
CF32C003
ELBOW TWIN 90° 100
Only used with wall mounted manifold or unit (wall terminal only)



FLUE EXTENSION
CF32T003
0.25M TWIN 100
(CAN BE CUT)

FLUE EXTENSION
CF32T004
1.0M TWIN 100
(CAN BE CUT)



WALL BRACKET
CF32T006
Wall bracket is required to secure the flue part to the wall.



KIT-OPEN FLUE ADAPTOR 32L
CF32K001
The kit is only required for installations with air intake from room.



FLU ADAPTOR - TWIN TO COAX
CF32C002
This component is required with wall and roof terminals in case of room sealed installation.



WALL PLATE SET 150
CF32C008



▶ ALWAYS HOT

COMMERCIAL

WARRANTY

Full Warranty terms and conditions are in the product's Owners Manual.

Feb 2018 v1

© Dux Manufacturing Limited ABN 19 077 879 844. Lackey Rd, PO Box 209 Moss Vale, NSW 2577. The information supplied was correct at time of printing. Specification and materials may change without notice. ® and ™ Trademarks of Dux Manufacturing Limited.